

Bass

PUT YOUR HAT ON

♩ = 120

by Klaus Schindler (*1956)

Bass

mf

5 $\text{\textcircled{C}}$ C F G C

9 C F G C

13 Dm7 C G C

17 Dm7 C G $\text{\textcircled{0}}$

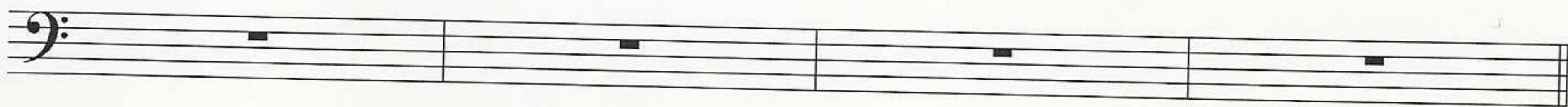
21 $\text{\textcircled{C}}$ *più mosso* = 122 F G C

25

F

G

C



D.S. al Coda

29

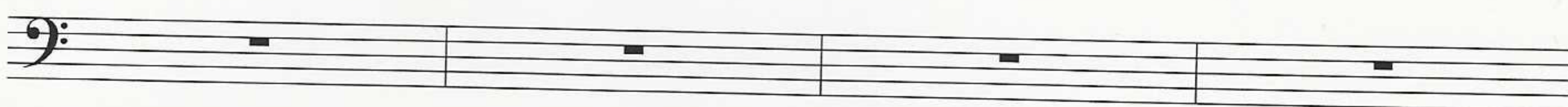
$\text{\textcircled{C}}$

più mosso = 124

F

G

C



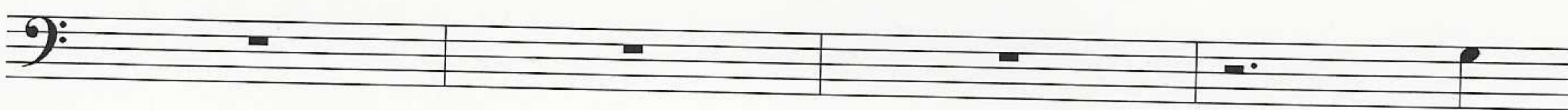
33

C

F

G

C



37

più mosso = 126

F

G

C



41

G

C

G

C

