

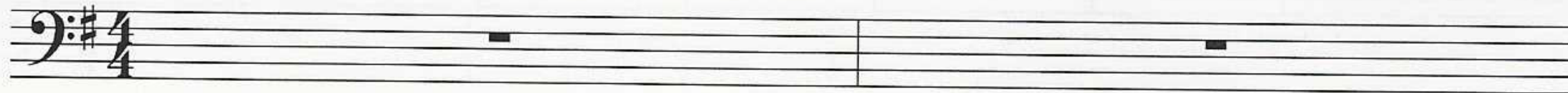
Bass

SUMMER SERENADE

♩ = 112

by Klaus Schindler (*1956)

Bass



3



7



11



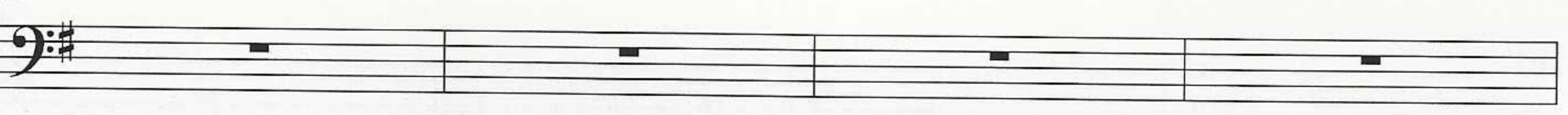
15



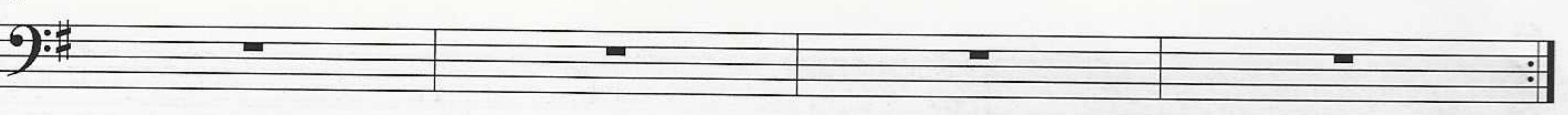
19



23



27



LOBBY NIGHT

31



Musical notation for measures 31-34, bass clef, key signature of one sharp (F#). The melody consists of quarter notes and dotted quarter notes.

35



Musical notation for measures 35-38, bass clef, key signature of one sharp (F#). The melody consists of quarter notes and dotted quarter notes.

39



Musical notation for measures 39-42, bass clef, key signature of one sharp (F#). The melody consists of quarter notes and dotted quarter notes.

43



Musical notation for measures 43-46, bass clef, key signature of one sharp (F#). The melody consists of quarter notes and dotted quarter notes, ending with a sixteenth-note triplet.

47



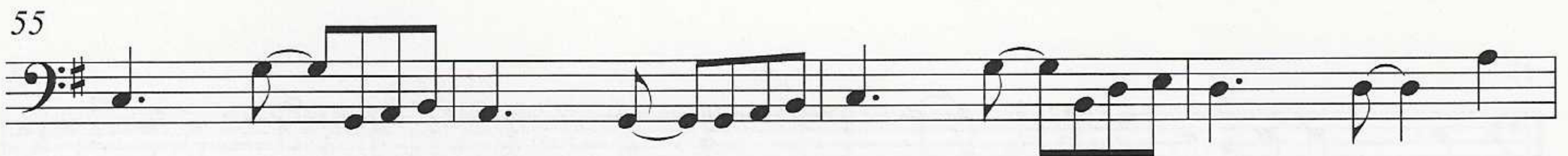
Musical notation for measures 47-50, bass clef, key signature of one sharp (F#). The melody consists of quarter notes and dotted quarter notes.

51



Musical notation for measures 51-54, bass clef, key signature of one sharp (F#). The melody consists of quarter notes and dotted quarter notes, ending with a sixteenth-note triplet.

55



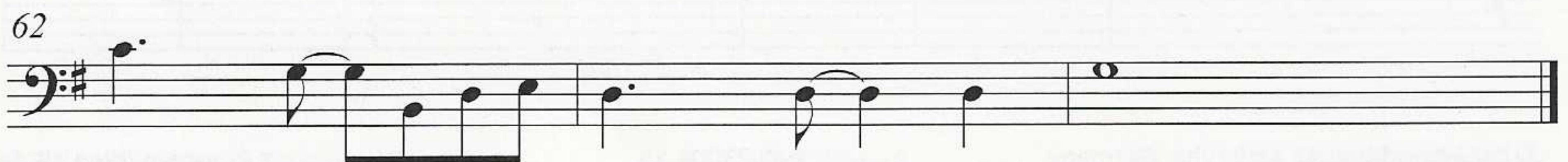
Musical notation for measures 55-58, bass clef, key signature of one sharp (F#). The melody consists of eighth-note and sixteenth-note patterns.

59



Musical notation for measures 59-61, bass clef, key signature of one sharp (F#). The melody consists of eighth-note and sixteenth-note patterns.

62



Musical notation for measures 62-64, bass clef, key signature of one sharp (F#). The melody consists of eighth-note and sixteenth-note patterns, ending with a whole note.